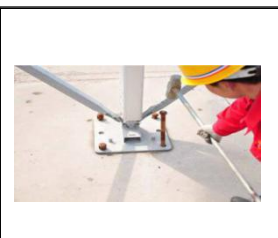


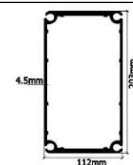
Item	Specification
Clear-span width	18m
Eave height	3.91m/4.91m/5.91m
Ridge height	6.76m/7.76m/8.76m
Bay distance	5m
Main frame	203 x 112 x 4.5 (mm)
	Hard pressed extruded aluminium alloy 6061-T6
Steel parts	Hot dipped galvanized steel
Roof material	PVC knife-coated polyester fabric 850g/m <sup>2</sup>
	fire retardant B1. temperature resistance is -30°C-+70°C
Roof fixing	Bar tensioning
Wind loading	120km/h
Weight	3266kg(+595kg)/3495kg(+625kg)/3740kg(+656kg)
Volume	9.29m <sup>3</sup> (+2.20m <sup>3</sup> )/10.05m <sup>3</sup> (+2.31m <sup>3</sup> )/10.82m <sup>3</sup> (+2.43m <sup>3</sup> )



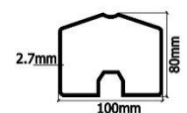
### Optional Accessories

- PVC window sidewalls
- Anchoring
- Rain Gutter
- Lining and curtain
- Glass door units
- Hard walling system
- Glass walling system
- Transparent PVC cover and sidewall
- Flooring system
- Weight plate

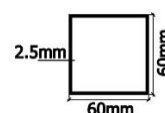
### Framework main profile dimension and use



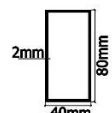
Main frame profile



Eave purlin



Roof purlin



Roof tension tube